



ENERGY CONTROLS
Metering, Measuring and Managing Resources

ENERGY CONTROLS

MID Legislation: Enforcing and Educating



Contents

What is MID Legislation? 3

Government Regulations

What is the Aim of MID Approval?

MID Approved Electricity Meters 4

MID Markings; Are You Compliant?

What Does an MID Compliant Meter Look Like?

What Does a Non MID Compliant Meter Look Like?

Non-Compliance with the MID Legislation 5

MID Compliance Guide 6

Who Are Energy Controls? 7

Energy Controls Smart Meters

Better Control of your Energy

Contact Us



What is MID Legislation?

Every new electricity meter or gas meter installed for billing purposes must be approved to MID (Measuring Instruments Directive) regulations. MID legislation came into effect in October 2006 and ran alongside the original Ofgem legislation for 10 years. In October 2016, MID superseded Ofgem legislation completely.

The Measuring Instruments Directive (MID) corresponds with the requirements of 10 different measuring instrument types, including gas and active electrical energy meters.

Meters installed by Landlords and Property Managers for sub-metering must now conform to the exactly the same standards as meters installed by the Electricity Supply Companies.

Government Regulations

MID approved instruments have to pass specific conformity assessment procedures and have set MID markings which allow the instruments to be used within the EU.

Government regulations state:

“Meters approved under Ofgem prior to October 2006, and that are in-service prior to October 2016, can continue in-service for as long as they meet the requirements under the Electricity Act 1989, but any meters newly installed after October 2016 must be MID approved.”

What is the Aim of MID Approval?

The aim of MID approval is to provide both manufacturers and consumers with reassurance of a high level of safety, reliability and accuracy of the measuring instrument.



MID Approved Electricity Meters

Whether you have an existing electricity meter or you're looking to purchase a new electricity meter, it is vitally important to know what to look for when checking that your smart meter is MID approved in order to avoid purchasing or owning a meter that is not MID approved.

MID Markings; Are You Compliant?

A list of governing bodies, together with the instruments they have been designated to approve, is available on-line.

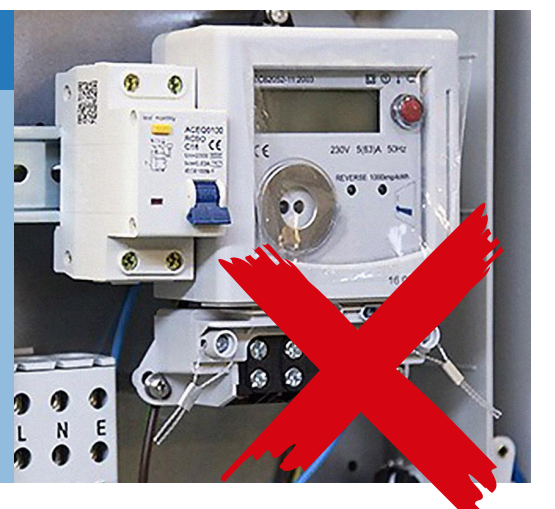
MID approved gas and electricity meters can be identified by their specific markings, as required under the directive. These consist of:

- The MID marking which is made up of the letter 'M' and then the year of manufacture (for example a meter manufactured in 2011 would have the following MID marking M11)
- **A four-digit code representing the notified governing body that approved and verified the meter. If your meter does not display these markings, it is not MID approved.**

What Does an MID Compliant Meter Look Like?



What Does a Non-Compliant Meter Look Like?





MID & OFGEM LEGISLATION

How does MID affect you?

Under the Measuring Instruments Directive (MID) legislation, electricity meters can only be certified by approved bodies. Without this approval, a meter is classed as illegal to use for billing purposes.

Despite this, many landlords and property managers have been mis-sold meters that do not comply with the MID legislation. This may be through no fault of their own, as some meter suppliers sell cheaper, lesser quality products that do not meet the right standards without declaring, the non MID approved status of the meter.

There are many meters that do not comply with the law because they're not MID approved, yet it is the landlord and/or the property manager who will be liable if caught. It is the buyer's responsibility to ensure that the meters they install within their business premises, are compliant with the MID legislation.

By using a meter that does not comply with MID regulations and that isn't MID approved, the landlord and/or property manager is breaking the law, whether aware or not.

With this in mind and to make sure you are compliant you should ask your meter supplier to provide you with an **MID Approval Certificate** that quotes your specific meter product number.

The certificate should be dated BEFORE the date that you installed your meters otherwise it is not relevant.

MID Compliance Guide

It is a criminal offence to use a non-approved meter for billing and therefore all MID approved meters MUST carry the full MID marking.

This applies to meters used for billing, whether for main supply (primary meters) or for internally distributed sub-supplies (secondary meters). MID legislation makes no distinction between primary main supply meters and secondary sub-billing meters.

From October 2016, for residential, commercial, or industrial landlords or property managers, a MID-approved meter must be employed in:

- **Multi-use commercial buildings**
- Industrial Estates
- **Sub-let shops or concessions**
- Residential flats
- **Marinas**
- Caravan parks
- **Data centre server supplies**
- Sports facilities
- **Any charging of electricity by meter reading**

The use of unapproved meters is prohibited by MID Legislation 2006 & the Electricity Act 1989 and to bill electricity or gas with a non-approved meter is classed as a criminal offence.



Who Is Energy Controls?

Energy Controls is the UK's leading and award winning supplier of electricity smart meters and prepayment metering systems.

With over 25 years' experience behind us we know everything there is to know about providing the best metering solutions for sub-metering installations.

Energy Controls' Smart Meters.

At Energy Controls, our smart meters provide the most flexible metering solution to give you complete control of your energy supplies.

Essentially, each meter is approved to MID (Measuring Instruments Directive) standards and manufactured to meet the demanding requirements of the Energy Supply Companies.

Our smart meters are ideal for all types of sub-metering applications ranging from Landlord properties to Holiday Parks and Housing Associations. We also supply three phase smart meters for larger commercial installations.

Each smart meter includes an integral GSM/GPRS modem and a SIM card to enable direct, independent communication to our Cloud based software from anywhere in the world using a standard internet connection.

Better Control of your Energy

Using our extensive knowledge of metering products and the marketplace, we are able to offer the highest standards of support services to our customers.

This includes our fully hosted data collection and robust prepayment solution using the latest web based smart metering software.



Contact Us

Energy Controls Group Ltd.
PO Box 1141
Stratford Upon Avon
CV37 1XN

T 0345 230 4535

E sales@energycontrols.co.uk